

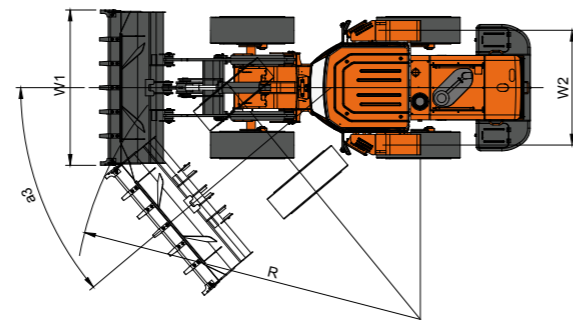
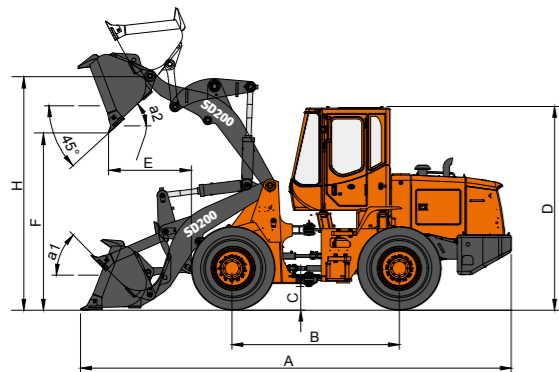
Specification

Overall working weight	kg	10,400	Front and Rear Axles	
	lb	22,928	TYPE	FULLY FLOATING PLANETARY-TYPE HUB DRIVE FIXED MOUNTING(FRONT) TRUNNION MOUNTING(REAR) PLANETARY
Capacity heaped ISO/SAE	m ³	1.7	Final decelerate type	
	yd ³	2.2	Tyre	
Rated load	kg	3,000	Tyre specification	17.5 -25-12 PR
Max traction force	KN	96	Front tyre pressure	Mpa 0.32
Max breakout force (kN)	KN	99	Rear tyre pressure	Mpa 0.3
	lbf	21,582	Steering System	
Max gradability	Degree	30	Type	Gear
Dump height (at 45°) 1	mm	2,815	Steering angle	degree 40
(at fully raised)	ft in	9'2"	Min. turning radius (outside tires)	mm 5,090
				ft in 16'7"
Dump reach (at 45°) 1	mm	1,195	Min. turning radius (outside bucket)	mm 5,710
(at fully raised)	ft in	3'9"		ft in 18'7"
Overall dimension(LxWxH)	mm	6,950x2,496x3,280	Hydraulic system	
Engine			System working pressure	bar 170
Model		Weichai-Deutz WP6G125E22	Boom lifting(full load)	sec 5.3
Type		TURBO, DIRECT INJECTION	Total time	sec 9.9
Number of cylinder		6	Brake system	
Bore/stroke (mm)		105 X 130 (mm)	Service brake	AIR PUSH HYDRAULIC SINGLE LINE
Max torque		500 N.m/1400~1500 rpm	Parking brake	SPRING-APPLIED AIR RELEASED SLIDING CALIPER DISC BRAKE
Rated power		92 Kw/2200 rpm	Fill capacity	
Rated speed		2,200 rpm	Fuel	liter 150
Min fuel consume ratio		215 g/kw.h @ RATED SPEED	Hydraulic oil	liter 127
Transmission system				
Torque converter type		Single Stage, Single phase, Three elements(single turbine)		
Torque ratio		3.25		
Transmission type		4 SPEED, POWER-SHIFT, COUNTERSHAFT		
Gear shift		4 forward shift, 1 back		
Max speed	km/h	38.0 KPH		

* Specifications are subject to change without notice for quality improvement.

Dimension

A. Height to top of cab and canopy	mm	3,280	K. Dump height (at 45°) 1	mm	2,815
	ft in	10'8"	(at fully raised)	ft in	9'2"
B. Ground clearance	mm	350	L. Maximum rollback at ground	degree	45
	ft in	1'1"	Max. tilt angle at ground		
C. Machine center point to rear axle	mm	1,460	M. Hinge pin height at carry position	mm	480
D. Wheel base	mm	2,830		mm	50
	ft in	9'3"	N. Maximum digging dep	ft in	2"
E. Overall length	mm	6,950	O. Width over tires	mm	2,290
	ft in	22'8"		ft in	7'5"
F. Max. tilt angle (fully raised)	degree	61	P. Tread width	mm	1,850
G. Bucket dump at full height	degree	45		ft in	6'
H. Dump reach (at 45°) 1	mm	1,195	Q. Turning radius outside tires	mm	5,250
(at fully raised)	ft in	3'9"		ft in	17'2"
I. Maximum overall height	mm	3,280	R. Maximum steering angle (each side)	degree	40
	mm	3,740	S. Bucket width	mm	2,496
J. Hinge pin height at full lift	ft in	12'3"		ft in	8'2"
			T. Turning radius outside bucket	mm	5,710
				ft in	18'7"



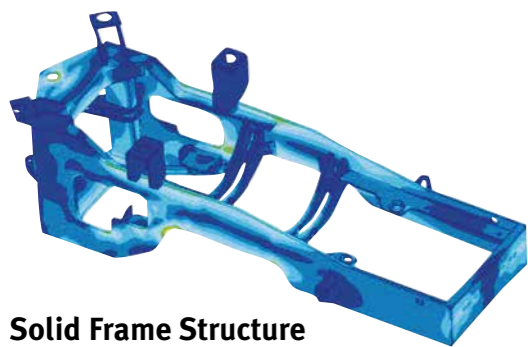
1) Measured to the tip of the bucket teeth or bolt-on edge.

2) SD200: All measurements with tyres 17.5-25-12PR

DISD

Wheel Loader SD200





Solid Frame Structure

The most advanced 3D CAD and FEM technologies are adopted in the analysis of technical design, greatly improving the strength, durability and reliability of the device.



Weichai-Deutz WP6G125E22
Fuel saving and environment friendly low-speed engine, satisfying Tier-II emission standards.



Transmission Shaft : Double Bearing Drive Shaft

- Double bearing supporting propeller shaft in dual configuration for improving reliability of propeller shaft.
- Lubricating oil can be infused easily, enhancing the durability of the transmission shaft.



Radiator

Aluminum radiator is stronger and better in quality than copper radiator. Aluminum radiator enhances reliability of the machines.

Features of DISD wheel loader

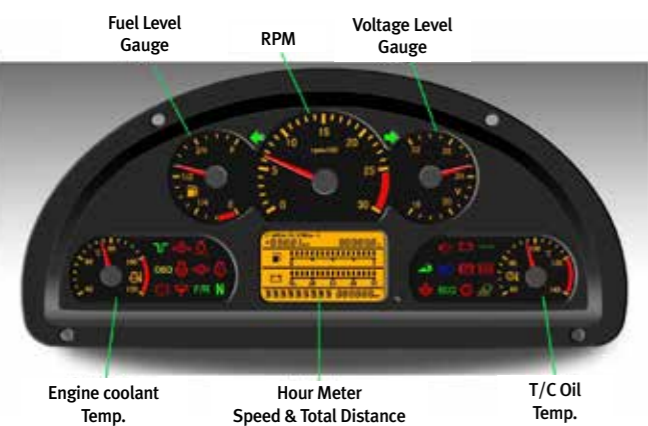
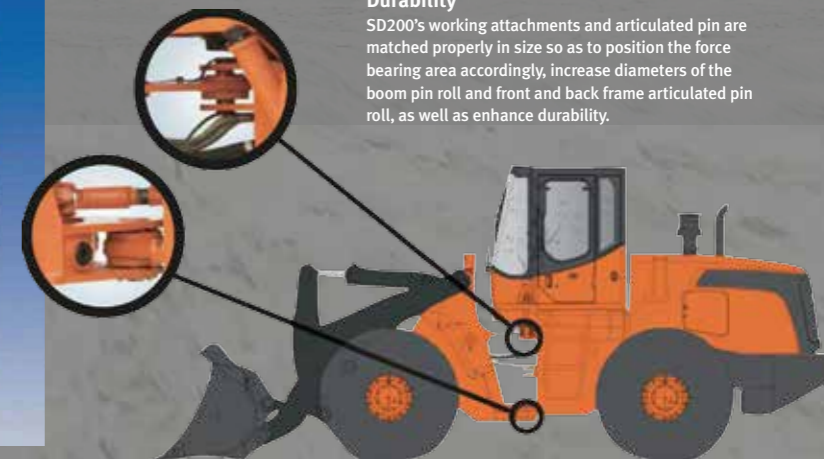
- Stronger breakout force and tractive force, reflecting excellent performance in a high-load working environment.
- Ideal operating speed and 40° steering angle, sharply improving work efficiency.
- Reasonable matched top-end technology, ensuring a more reliable, durable and efficient device.
- Noise reduction technology in line with international standards, providing operator with physical and mental protection, while bolstering work efficiency.
- Industry leading cooling system, offering a guarantee for continuous and uninterrupted work under high temperatures.
- Streamlined appearance and wide operating room, representing an international brand style.

Cooling Performance
An optimal radiator design ensures the good performance of the loader and enhances the durability of parts such as the engine and pumps etc.



Durability

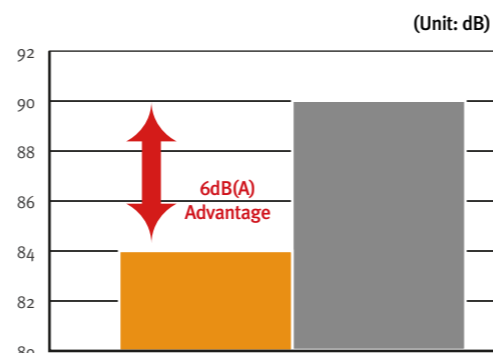
SD200's working attachments and articulated pin are matched properly in size so as to position the force bearing area accordingly, increase diameters of the boom pin roll and front and back frame articulated pin roll, as well as enhance durability.



New Operator Panel

The instrument panel has been changed to improve operator comfort and convenience.

Lower Noise!
Offering a quiet and comfortable working environment and improving efficiency.



Air Flow Increased by 30%

Excellent air-conditioning system and air circulation function as well as perfect defrost system provide operator a more comfortable operating environment and more easy controlling methods to benefit from the above functions.



Full Tilting of Engine Cover

With this one body engine cover, it is easy to repair engine and sub parts.

Easy and Quick Adjustable Maintenance Window
The 180° side-opened maintenance window provides a quick and direct view for inspection, largely saving daily monitoring and maintenance time.

Inspection for High/Low Hydraulic Oil Level
Used to monitor the hydraulic oil level more easily to reduce maintenance time, improving device service lifetime.

Quickly Changeable Brake Disc

Brake disc can be replaced quickly and easily without disassembling tires, deeply shortening the maintenance time and saving time and labor cost.

High Efficiency Cooling Fan

The cooling fan of non-isometric blades can reduce noise and increase air flow.

Outdoor Power switch Used to cut off battery power when necessary to enhance maintenance safety and convenience while protecting the battery and extending battery life when the device is parked for a long time.

